



## MODEL JK6 15.220 FL

**8 TON  
4x2 FREIGHT CARRIER**

# MODEL JK6 15.220 FL

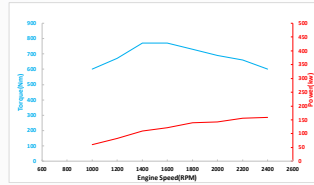
8 TON  
4X2 FREIGHT CARRIER

## CAB

Cab Control	Forward Tilt Cab
Seating	Driver + 2 Passengers
Type/Extras	Semi Sleeper with Aircon, Suspension Seat, Electric Windows

## ENGINE

Make & Model	FAW BF6M2012-22E3
Capacity	6 060 cm <sup>3</sup>
Layout & Type	6 cylinder in line, water cooled, turbo charged & intercooled
Emissions Standard	Euro III
Power @ r/min (kW)	165 @ 2 500
Torque @ r/min (Nm)	770 @ 1 500



## TRANSMISSION

Make & Model	FAST-8JS85TC
Type	8 Speed Manual Syncromesh
Forward Ratios	7.34, 5.24, 3.76, 2.82, 1.95, 1.39, 1.00, 0.75
Reverse Ratio	7.34, 1.95

## CLUTCH

Diameter	395 mm
Type	Single Plate
Operation	Hydraulic-Air Assisted

## STEERING

Gear Ratio	20.5:1
Type	Recirculating Ball
Operation	Power Assisted

## PERFORMANCE

Gradeability @ V	Max 30%
Permissible Road Speed	80km/h

## AXLES

Front Axle	I-section Beam (forged steel)
Rear Axle - Gearing Type	Full Floating - Single Reduction
Rear Axle Ratio	4.875:1

## BRAKES

System Type	Full Air - Dual Circuit with ABS
Park/Emergency System	Spring Brakes/Rear Booster

## FUEL TANK

Number	One
Total Capacity	200 Litre

## ELECTRICAL SYSTEM

System Voltage & Type	24V Negative Earth
No. of Batteries	Two X 12V

## CHASSIS

Type	Straight Ladder Type - Riveted
Front Suspension	Parabolic leaf springs with double acting shock absorbers with stabilizer bar
Rear Suspension	Parabolic leaf springs

## WHEELS

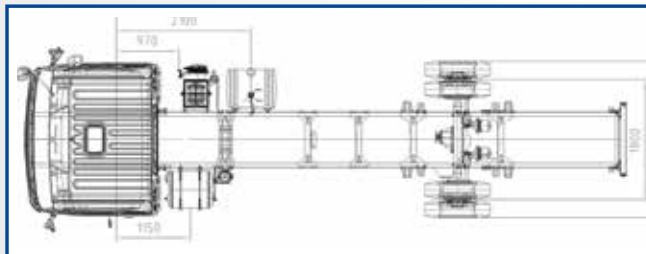
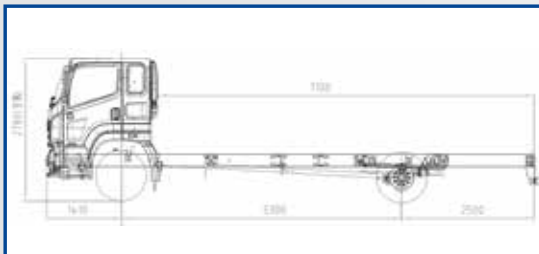
Tyre Size	275/70 R22.5 16PR
Rim Size	8.25 X 22.5
Type	Tubeless Radial

## MASS DATA

	kg
Manufacturer's Gross Vehicle Mass (GVM)	16 000
Manufacturer's Gross Combination Mass (GCM)	24 000
Manufacturer's Front Axle Mass (GA Front)	6 000
Manufacturer's Rear Axle Mass (GAU Rear)	10 000
Permissible Gross Vehicle Mass (V)	15 000
Permissible Gross Combination Mass (D/T)	24 000
Permissible Front Axle Mass (A Front)	6 000
Permissible Rear Axle Mass (A Rear)	9 000
Unladen Front Axle Mass (T Front)	2 950
Unladen Rear Axle Mass (T Rear)	1 850
Unladen Mass Total (Tare)	4 800
Body and Payload Allowance	10 200

## DIMENSIONS

	mm
Wheelbase (WB)	5 300
Overall Length (OL)	9 210
Cab Length (A)	2 150
Overall Width (OW)	2 380
Overall Height (OH)	2 780
Front Overhang (D)	1 410
Rear Overhang (ROH)	2 500
Cab to Rear Axle (CA)	4 700
Recommended Body Length	7 200
Cab to End of Chassis (F)	7 350
Minimum Turning Radius	9 100
Minimum Turning Diameter	18 200
Ground Clearance	413
Track - Front	1 950
Track - Rear	1 800
Chassis Outer Width	865
Chassis Inner Width	680



The above specifications are not binding - subject to change without prior notice.